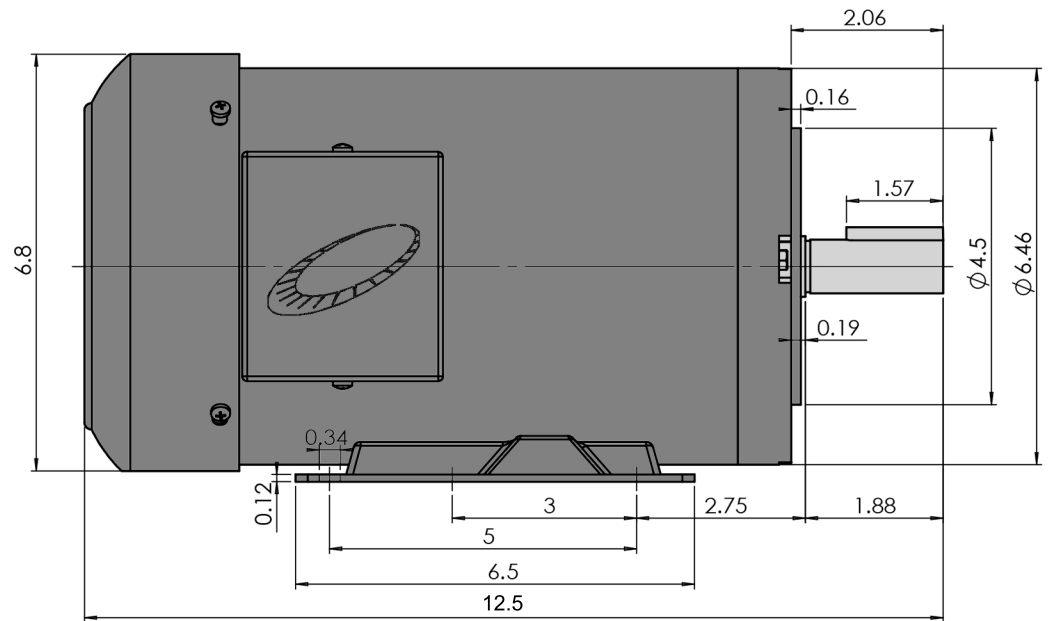
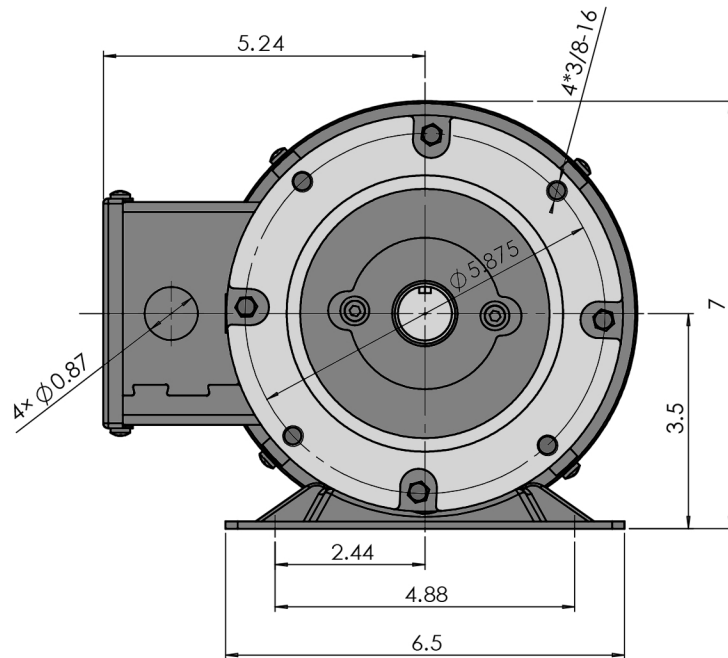
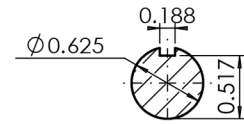


MaxMotion



MPRP-204CH

Version:2HUA

Revised: July 2020

HP

RPM

FRAME

ENCLOSURE

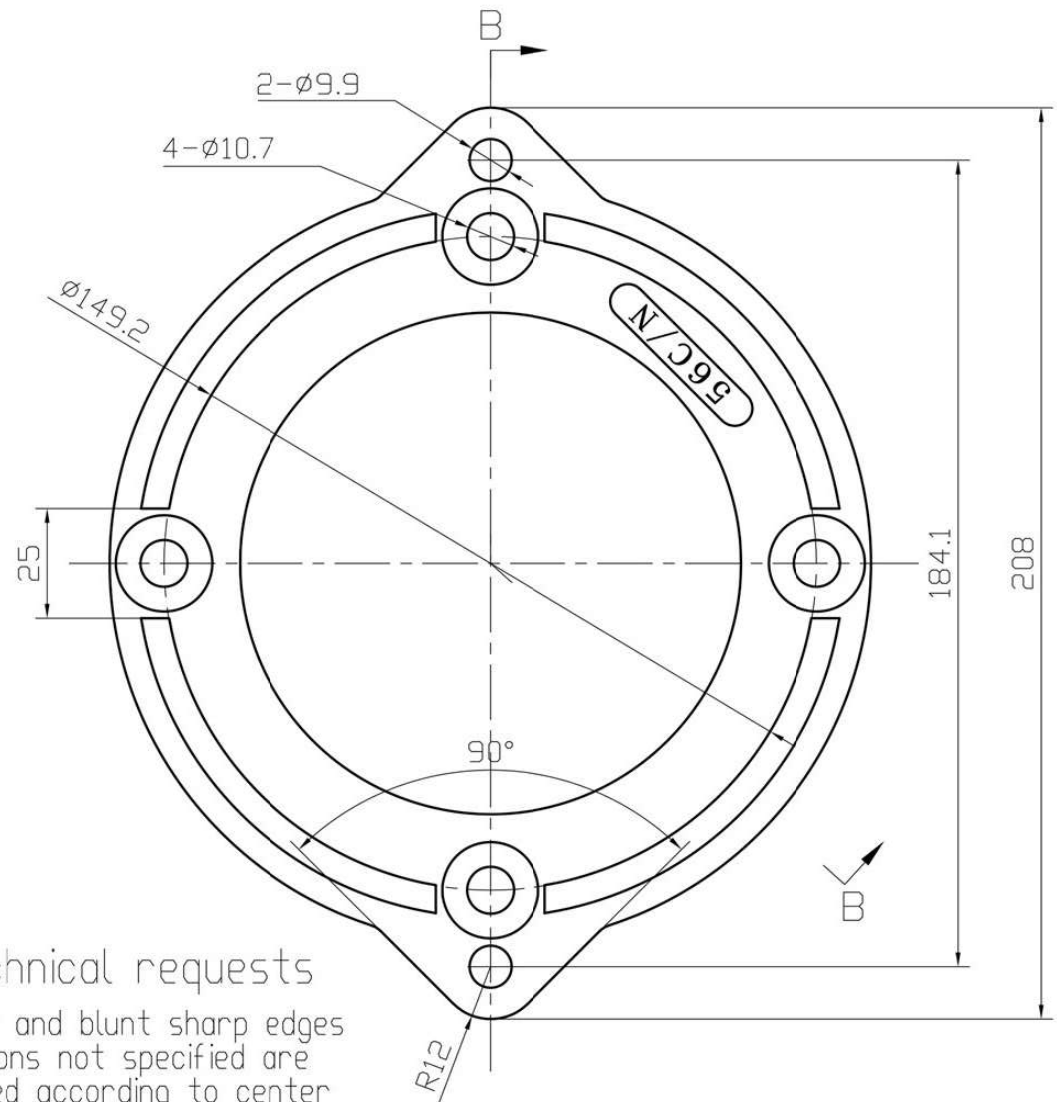
Customer is responsible in determining that MaxMotion product will fit/perform suitably in the intended application

2

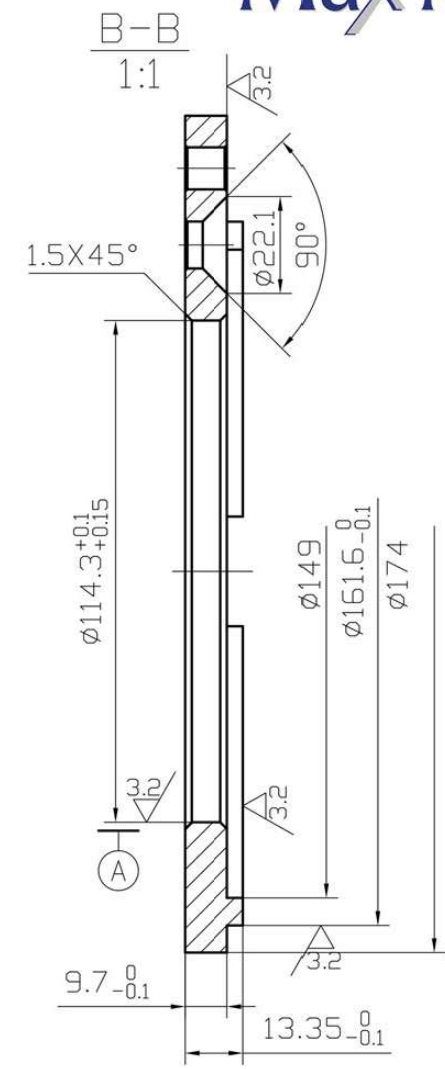
1800

56HC

TEFC

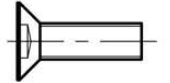


technical requests
deburr and blunt sharp edges
dimensions not specified are
machined according to center
symmetry



ITEM #:56C/N


 5/16-18UNCx1-1/4
 With Spring Washer Galvanized
 2 PCS


 3/8-16UNCx1
 Blackening
 4 PCS